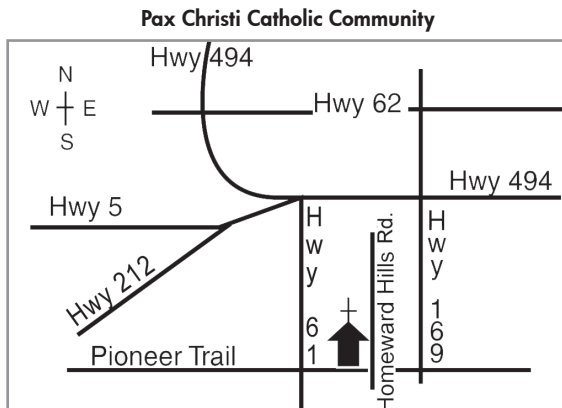


**Southwest Grief Coalition**  
**Interdenominationally sponsored**  
**by these area churches:**

**FALL 2017 LOCATION**

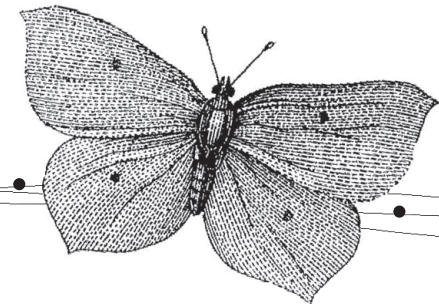
- **Pax Christi Catholic Community**  
12100 Pioneer Trail, Eden Prairie  
Jean Thoresen, Dir. of Care and Support Ministry  
952-941-3150 / [www.paxchristi.com](http://www.paxchristi.com)
- **Eden Prairie United Methodist Church**  
15050 Scenic Heights Road, Eden Prairie  
Pastor Dan Schneider-Bryan  
952-937-8781 / [www.prairiechurch.org](http://www.prairiechurch.org)
- **Family of Christ Lutheran Church**  
2020 Coulter Boulevard, Chanhassen  
Pastor Jeanne Aamot  
952-934-5659 / [www.familyofchristonline.com](http://www.familyofchristonline.com)
- **Immanuel Lutheran Church**  
16515 Luther Way, Eden Prairie  
Pastor Susan Weaver  
952-937-8123 / [www.immanuel.us](http://www.immanuel.us)
- **St. Andrew Lutheran Church**  
13600 Technology Drive, Eden Prairie  
Pastor Peter Johnson  
952-937-2776 / [www.standrewlu.org](http://www.standrewlu.org)



Fall 2017

# Living and Growing Through Loss

Sponsored by  
Southwest  
Grief Coalition



- **Grieving**

Losing someone we love is one of life's most challenging passages. Learning about this process of grief, along with sharing our experience in a caring, supportive, and confidential setting, helps us to cope and leads to personal growth and healing.

These churches of the Southwest Grief Coalition are working together to provide support and education for those who are grieving.

- **Our Purpose**

To provide an opportunity for individuals to obtain information and support for a variety of loss and grief issues.



**We encourage you to attend the entire series.**

- **Session Format**

5:30–6:00pm      Gathering  
                          (\*light supper provided)  
6:00–6:30pm      Speaker  
6:30–7:30pm      Adult Small Groups

\*A light supper is provided each evening. There is no cost to participate in Living and Growing through Loss. Church affiliation is not required.

**To register for free childcare, call Pax Christi Holy Family Nursery, 952-405-7242, before September 21.**

**Fall 2017 Location:  
Pax Christi Catholic Community**

- **September 28 – “Holding onto Hope”**

Jean Thoresen  
Dir. of Care and Support Ministry  
Pax Christi Catholic Community

- **October 5 – “Grieving Mindfully”**

Nancy Lloyd  
Faith Community Liaison/  
Bereavement Coordinator  
Grace Hospice

- **October 12 – “The Garbage Can Theory - Communication of Feelings”**

Chaplain Rod Anderson  
The Colony at Eden Prairie

- **October 19 – “Am I Stuck on My Grief?”**

Vicki Franzen  
Marriage & Family Therapist

- **October 26 – “O Death Where Is Your Sting: Taking the Sting Out of Death”**

Deacon Al and Mary Ellen Schroeder  
Pax Christi Catholic Community

- **November 2 – “The Heart of Grief: Biblical Mediations”**

Fr. Marc Paveglio, Associate Pastor  
Pax Christi Catholic Community

- **November 9 – “Holiday Grief”**

Rev. Chris Wheatley  
Bereavement Coordinator and  
Director of Christian Ministry  
Presbyterian Homes/Optage

- **Education**

Each session contains both an education segment and a time for sharing in small groups. Each week a speaker will present a topic to help participants understand the bereavement process. We accept registrations for adult small groups for the first two weeks of the series.

- **Small Group Support**

People experiencing similar losses will have the opportunity to meet in small groups to share concerns and feelings following the speaker. These groups include:

- Loss of a spouse/partner
- Loss of a parent
- Loss of a child
- Loss of a sibling/family member/friend
- Suicide Survivors

Small groups are facilitated by those who are trained in the grief process and group dynamics. Many have experienced the death of a loved one.



*In some ways, love and grief are very much alike; they both have the power to forever change our lives. Just as I must surrender to love, I must surrender to my grief.*

–Alan Wolfelt